



Modular Remote Low Side Flake and Nugget Ice Machines

ITEM NO.

RL Series

C.S.I. File No. 11400

The RL remote low side Flake and Nugget Ice machines represent Scotsman's commitment to customers using central refrigeration systems.

REMOTE LOW SIDE

- Attaches to existing and new central refrigeration systems.
- Available in R-404A and R-22.
- Eliminates noise and removes heat from work areas.
- Can be connected to a separate remote condensing unit.

LONG SERVICE LIFE

- Evaporator, auger and breaker are all fabricated from durable stainless steel.
- Innovative "Interrupted Flight" auger design minimizes bearing loads.
- New gearmotor design includes heavy duty ball bearings.
- Large spherical top roller bearing self aligns, reducing bearing wear.

ENHANCED RELIABILITY

- Advanced electronics eliminate mechanical switches and sensors.
- Electronic water level control prevents problems associated with water pressure fluctuations.
- Continuous length evaporator refrigerant tubing eliminates potential refrigerant leaks.
- Long life – no compressor to maintain.

IMPROVED EFFICIENCY

- Photoelectric eye bin control allows maximum storage in bin.
- Continuous ice making, no hot gas cycle, no water dump.
- Lower KWH usage per 100 lbs. of ice than cubers.

LOWER SERVICE COSTS

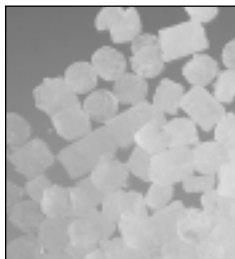
- Most major components are accessible from the machine front. Less repair time equals less repair costs.
- Installation made easy by placing all utility connections on back panel, accepting standard plumbing fittings.
- System design minimizes cost of component failure.

VERSATILITY

- 915 to 2000 lbs. production to satisfy every ice need.
- Flake or Nugget Ice forms for multipurpose application.
- Fits a variety of Scotsman Ice Storage Bins – the modular design allows the user to choose the right bin or cart system to meet their needs.

WARRANTY PROTECTION

- See Dealer for details of Limited Warranty.
- 2 years parts and labor on all components.
 - 5 years parts on compressor.
 - Directory of Certified Dealer Service.



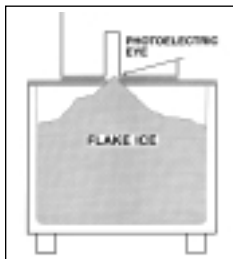
FLAKE ICE

Inexpensive to produce, used in produce and fish displays.



NUGGET ICE

Versatile, used in carbonated beverages and salad bars.



PHOTOELECTRIC EYE

For maximum bin storage, photoelectric eye turns machine off when ice level reaches chute.

This product qualifies for the following listings:



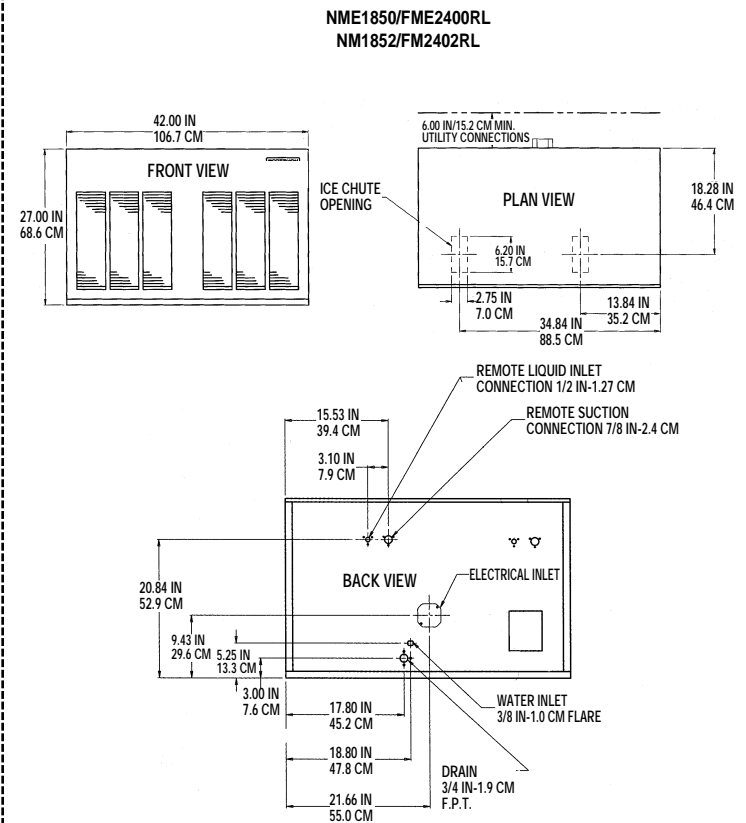
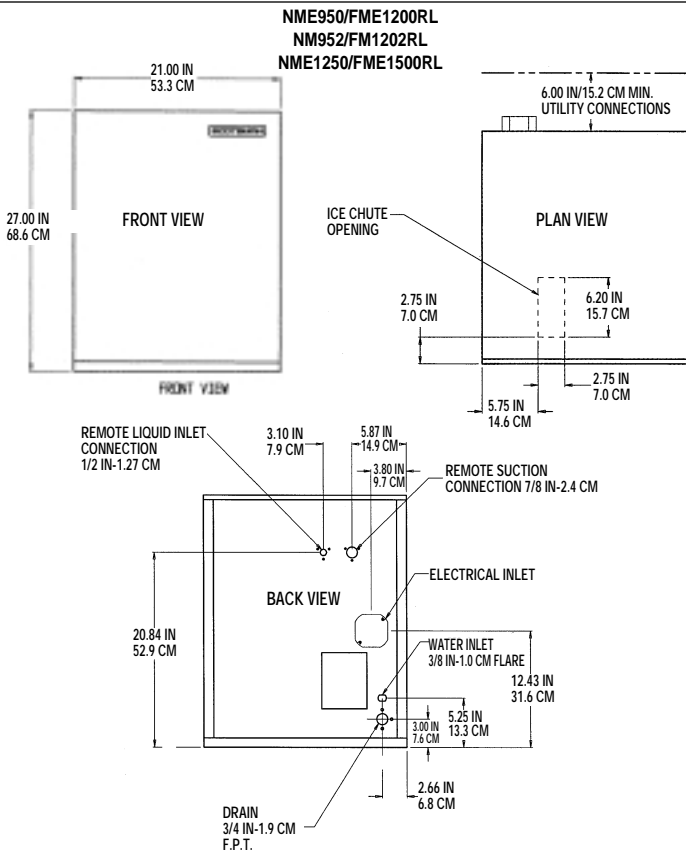
SCOTSMAN[®]
Ice Systems The World Relies On.[™]

Consultant/Contractor Approval

775 CORPORATE WOODS PARKWAY • VERNON HILLS, IL 60061 • (847) 215-4550
FAX (847) 913-9844
E-mail: customer.service@scotsman-ice.com

Printed in U.S.A.
3.5M 11-97

RL Series MODULAR REMOTE LOW SIDE FLAKE AND NUGGET ICE MACHINES



Dimensions: W x D x H Unit: 21" x 24" x 27" Shipping Carton: 28" x 25" x 32"

Model	Ice Form	Ice Prod. Lbs./24 hrs. 70° Air 90° Water 70°	Finish	Ship Wt. lbs./kg.	Basic Electrical Volts/Hz/Phase	No. of Wires	Min. Circuit Ampacity	Max. Fuse Size or HACR Circuit Breaker	Power KWH/100 lbs. 90°F/70°F 70°/50°	Potable Water Usage-Gallons/100 lbs. of Ice 90°F/70°F 70°/50°	Ref.	Refrigerant Requirement Btu / Hr*
NME950RLE-32A	Nugget	1090 915	EG	145/65	208-230/60/1	2	2.0	15	NA NA	12 12	R-404A	7,500
FME1200RLE-32A	Flake	1180 1000	EG	145/65	208-230/60/1	2	2.0	15	NA NA	12 12	R-404A	7,500
NME1250RLE-32A	Nugget	1330 1100	EG	145/65	208-230/60/1	2	2.0	15	NA NA	12 12	R-404A	10,000
FME1500RLE-32A	Flake	1445 1205	EG	145/65	208-230/60/1	2	2.0	15	NA NA	12 12	R-404A	10,000
NM952RLE-32A	Nugget	1090 915	EG	145/65	208-230/60/1	2	2.0	15	NA NA	12 12	R-22	7,700
FM1202RLE-32A	Flake	1180 1000	EG	145/65	208-230/60/1	2	2.0	15	NA NA	12 12	R-22	7,700

Dimensions: W x D x H Unit: 42" x 24" x 27" Shipping Carton: 46" x 28" x 32"

Model	Ice Form	Ice Prod. Lbs./24 hrs. 70° Air 90° Water 70°	Finish	Ship Wt. lbs./kg.	Basic Electrical Volts/Hz/Phase	No. of Wires	Min. Circuit Ampacity	Max. Fuse Size or HACR Circuit Breaker	Power KWH/100 lbs. 90°F/70°F 70°/50°	Potable Water Usage-Gallons/100 lbs. of Ice 90°F/70°F 70°/50°	Ref.	Refrigerant Requirement Btu / Hr*
NME1850RLE-32A	Nugget	2180 1830	EG	255/115	208-230/60/1	2	2.7	15	NA NA	12 12	R-404A	15,000
FME2400RLE-32A	Flake	2365 2000	EG	255/115	208-230/60/1	2	2.7	15	NA NA	12 12	R-404A	15,000
NM1852RLE-32A	Nugget	2180 1830	EG	255/115	208-230/60/1	2	2.7	15	NA NA	12 12	R-22	15,500
FM2402RLE-32A	Flake	2365 2000	EG	255/115	208-230/60/1	2	2.7	15	NA NA	12 12	R-22	15,500

* At 0° Evaporator, 100°F Condensing, and 33 PSIG for R-404A units or 24 PSIG for R-22 units

OPTIONAL STAINLESS STEEL PANEL KIT: Contains top, front, two end and service panels. Not factory installed.

SPKFM21: For NME950RL, NM952RL, FME1200RL, FM1202RL, NME1250RL, and FME1500RL Machines.

SPKFM42: For NME1850RL, NM1852RL, FME2400RL, and FM2402RL Machines.

Units can be ordered with a stainless steel finish direct from the factory by substituting an "S" in the place of the "E" at the end of the model number, i.e. FME1200RLS-32A.

IMPORTANT OPERATING REQUIREMENTS:

Machine requires voltage indicated on rating name plate. Failures caused by improper voltage are not considered factory defects.

Scotsman's products are not designed for outdoor installations nor for installation where air temperatures fall below 50° F, or exceed 100° F; nor where water temperatures fall below 40° F, or exceed 100° F. Extended periods of operation at temperatures exceeding these limitations constitutes misuse under the terms of Scotsman Manufacturer's Limited Warranty, resulting in a loss of warranty coverage.

FME FLAKE AND NME NUGGET ICEMAKER SERIES

Model _____ icemaker manufactured by Scotsman Ice Systems. Production capacity to be _____ at 90°F air temperature and 70°F water temperature. To have factory installed photoelectric eye bin level control to automatically start and stop icemaker. Evaporator and auger to be constructed of stainless steel. Exterior cabinet to be baked enamel grey leathergrain stainless steel finish. Icemaker to be UL, CUL, NSF, and USDA listed.

SCOTSMAN®
Ice Systems The World Relies On.™

Continuing improvements to our products may necessitate changes without notice. Scotsman ice systems include a full line of ice shapes, modular and self-storing cubers, flakers, drink dispensers, bins and accessories.